

# RINGHALS EVACUATION CENTRE (REC)

*– A MOBILE CONTAMINATION MONITORING CENTRE FOR ACCIDENT SITUATIONS*

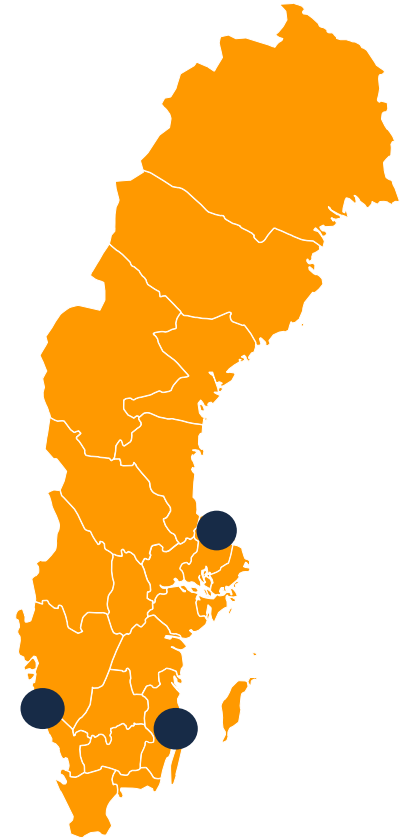
ISOE International Symposium Uppsala

26-28 June 2018

Annika Ljungberg, Ringhals NPP

# THE CHALLENGE

- To be fast enough to get the unit "up and running" within 2 hours from the alarm call
- To be flexible to face a situation in the NPP that can change rapidly
- To be mobile and adapt to a change in weather, or use the equipment to support Forsmark or Oskarshamn NPP.

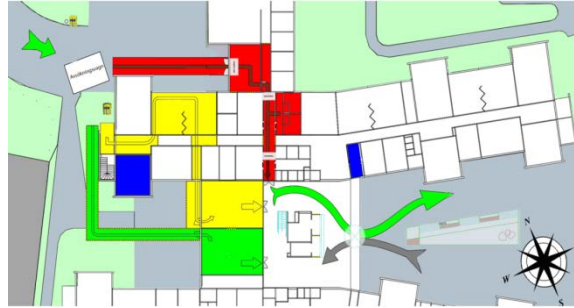


# WHAT DID WE WANT TO ACHIEVE?

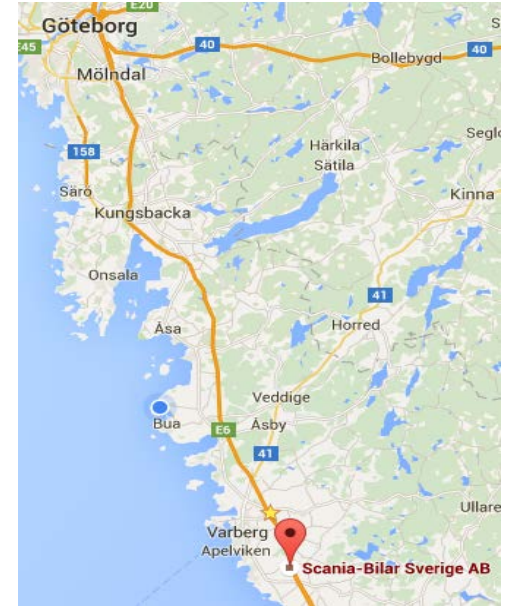
A prepared and trained personnel flow

A mobile and flexible solution

A new mindset, a bigger "box"



*Close to the NPP: REC*

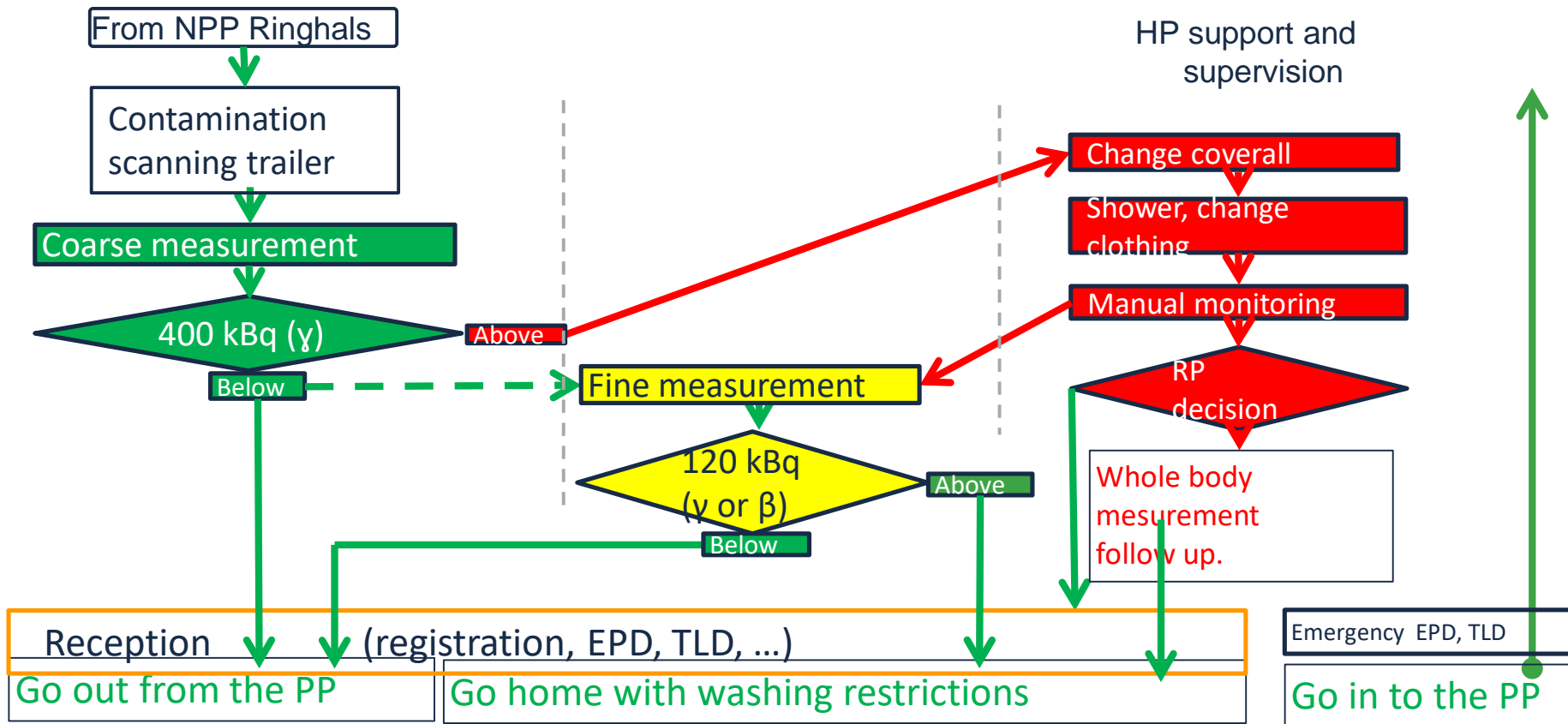


*30 km away: LogC*

# THE CONTAMINATION MONITORING TRAILER



# Pre installed levels in the REC monitoring flow



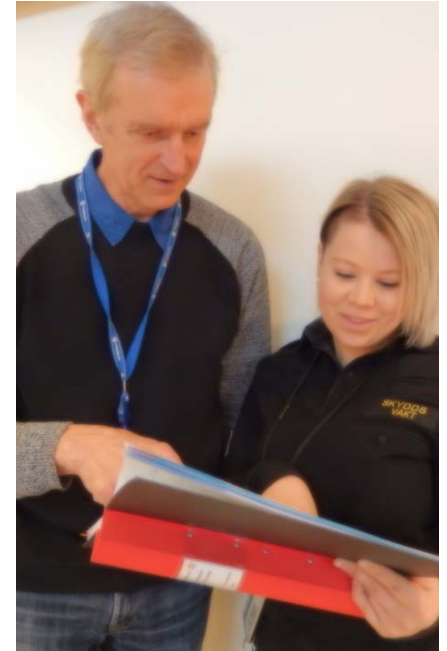
# EVERY PERSON IS A PIECE OF THE TOTAL PICTURE

REC is operated by 4 different roles:

- a supervisor
- a receptionist
- a health physics Technician and a instrument Technician.

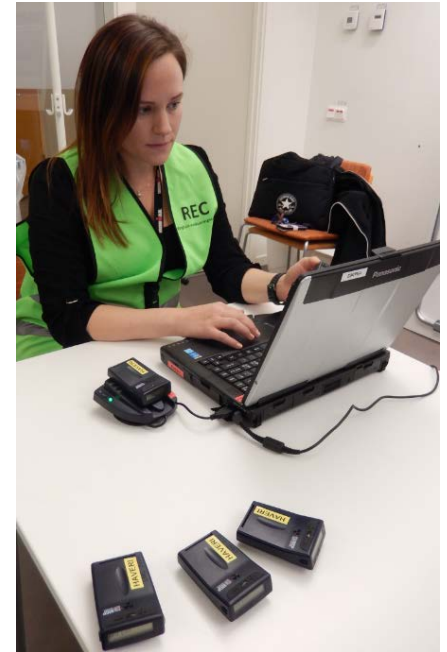
The first to arrive is to follow the initial order instructions and is in charge until the boss has arrived.

Practising together gives the knowlege to help each other



# DEVELOPMENT AND FINDINGS

- Redundance in all equipment
- Preinstalled levels and instructions for guidance
- Practical training and evaluation in several steps



# WHAT COULD WE HAVE DONE DIFFERENT?

## Contamination monitoring trailer:

- *Higher ground clearance*
- *If possible – a lower total weight for the trailer*
- *Lower overall height*
- *Heavier wheels and more weather-resistant material*

## Mobile backup power:

- *Not heavier than it can be lifted by one person alone*



# WHAT IS THE NEXT STEP?

We are here for to learn from you and exchange experiences, please get in touch with us

- Thank you for your attention -